

Surge Arrester - High Energy Installation

Quick Reference Guide

Required Tools and Equipment

- ▶ Antistatic wrist strap
- ▶ Small Phillips (#2) screwdriver
- ▶ Wire stripper and wire cutter
- ▶ Adjustable wrench
- ▶ Voltmeter
- ▶ Crimpers
- ▶ 10 AWG wire - stranded or solid; insulated or bare



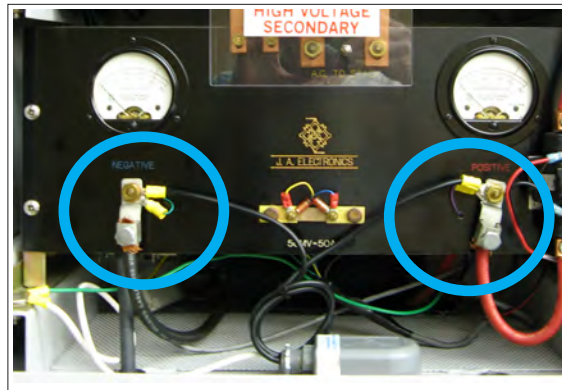
Installing the Equipment

WARNING: To prevent electrostatic discharge (ESD) damage when handling electronic equipment, always wear an antistatic wrist strap attached to an unpainted, grounded metal object. Ensure the wrist strap has maximum contact with bare skin. **If wires are to be buried or covered, conduit must be used to protect the wires.**

1 Connect Surge Arrester to Rectifier

- 1 Connect black wires to the positive and negative terminals of the rectifier output.

CAUTION: DO NOT lengthen the surge arrester's attached wires.



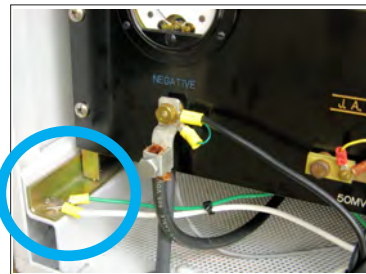
Rectifier Terminals

NOTE: If surge arrester will not fit inside rectifier enclosure, attach surge arrester to bottom of enclosure through a knock-out (or drilled hole) -- routing input wire through hole. Secure surge arrester at insertion point using included nut.

2 Ground Surge Arrester and Remote Monitoring Unit

- 1 Ground surge arrester (white wire in photo) and remote monitoring unit (green wire in photo) to rectifier frame using spade connectors. Loosen a nut on the frame and insert spade connectors; tighten nut.

Ground Connection on Rectifier



CAUTION: If the remote monitoring unit was already grounded, please call Technical Services (1-800-229-3404) for assistance before continuing.

- 2 Connect other end of remote monitoring unit's ground wire to unit using existing faceplate screw.



Ground Connection on Remote Monitoring Unit

- 3 If necessary, attach included I-beam ground clamp to rectifier frame (remove any paint where clamp will be attached) and then connect both ground wires to clamp. Insert spade connectors between washers and tighten nut.



Ground Clamp

NOTE: These procedures are general steps for a typical installation. If your installation requires additional technical assistance, please call the Technical Services group at 1-800-229-3404.